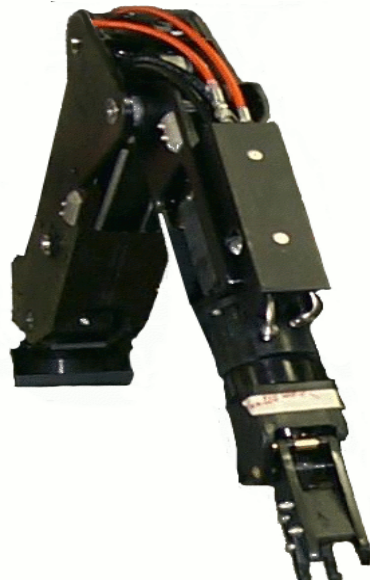


## MAGNUM-5 STD

### A rugged 5-function subsea manipulator



The *Magnum-5 Standard* from the magnum family, is a rugged 5-function manipulator used primarily in ROV applications. This manipulator is designed to be reliable while operating in harsh environments. Components and assembly make this arm completely field serviceable.

The small stow envelope makes the Magnum-5 ideal for cage deployed vehicles. Typical ROV installations have a Magnum-5 port side and a Magnum-7 starboard side. In this configuration, the Magnum-5 is usually used for precision maneuvers while still being able to lift significant loads. Both port and starboard versions are available.

This arm is ideal for jetting and brushing operations, debris clearance, valve turning and bolt torquing, cable cutting, cable repair, biological and geological sampling, archeological work, transponder and probe installation, salvage and recovery.

#### **Principal Characteristics**

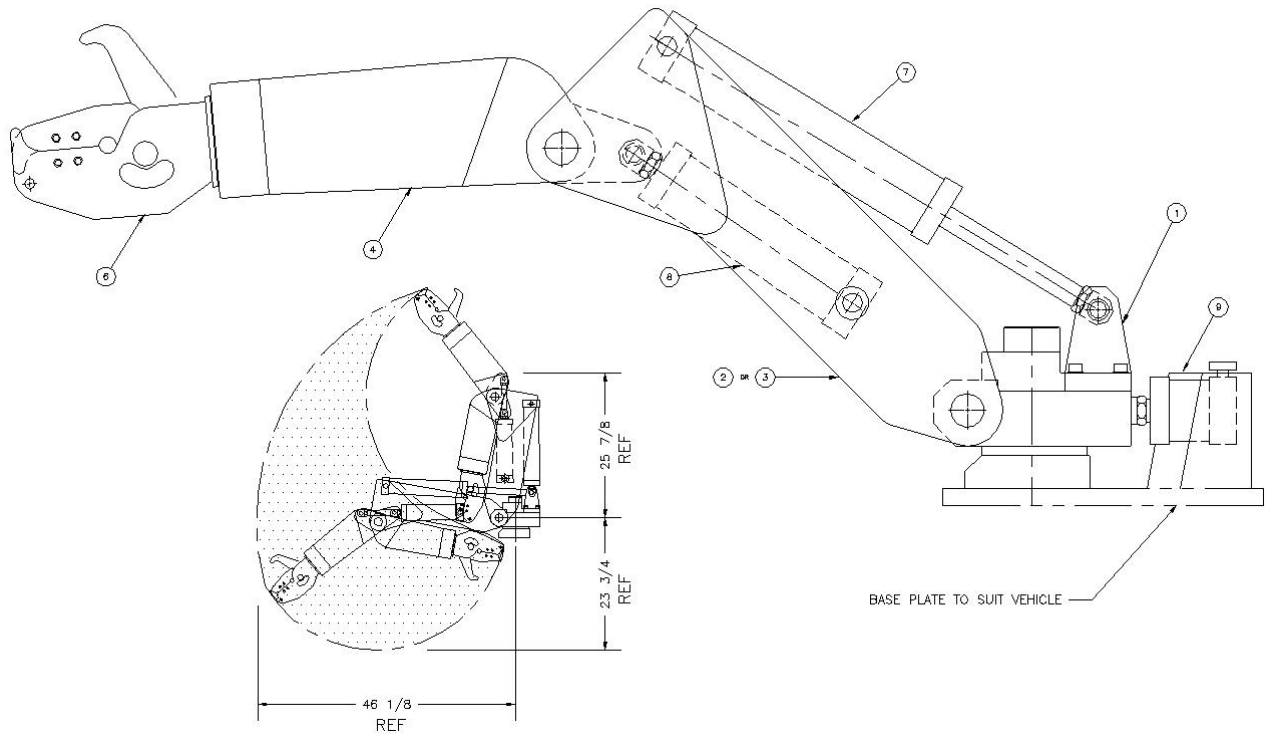
Reach:	46 inches
Weight:	57 Kg (125 lbs)
Maximum Lift:	454 Kg (1000 lbs)
Lift at Full Extension:	295 Kg (650 lbs)
Wrist Torque:	108 Nm (80 ft-lbs)
Grip Force:	160 Kg (350 lbs)
Operating Depth:	5,000 msw (16,400 fsw)
Hydraulic Fluid:	Shell Tellus (or equivalent)
Input Pressure:	6900 kPa (1000 psi)
Input Flow:	19 LPM (5 gpm)
Material:	Aluminum with stainless steel fittings
Corrosion Resistance	Black anodization and Magnesium anodes
Control:	Rate or Spatially Correspondent (master/slave)

#### **INTERNATIONAL SUBMARINE ENGINEERING LTD.**





1734 Broadway Street, Port Coquitlam, BC V3C 2M8 Canada  
Tel: 604.942.5223 Fax: 604.942.7577  
[info@ise.bc.ca](mailto:info@ise.bc.ca) [www.ise.bc.ca](http://www.ise.bc.ca)

# MAGNUM-5 STD



## Operating Envelope



## Gripper Options

Single Sided	Scissor	Claw	Parallel
			

## Controller Options

Rate	Master Slave
	

### **INTERNATIONAL SUBMARINE ENGINEERING LTD.**

1734 Broadway Street, Port Coquitlam, BC V3C 2M8 Canada

Tel: 604.942.5223 Fax: 604.942.7577

[info@ise.bc.ca](mailto:info@ise.bc.ca) [www.ise.bc.ca](http://www.ise.bc.ca)